



Portfolio of Programmes

2025

Our World is Changing...Shouldn't You?

OPEN PROGRAMMES

Management and Leadership

Programme	Duration (Days)	Start Date/s	Programme Fee
Senior Leadership Development Programme	15	26 Mar	R63 825
Management Development Programme	12	12 Mar 23 Jul	R49 650
Managing for Impact	3	26 Mar 11 Sep	R15 145
Emerging Managers Programme	6	26 Mar 11 Sep	R24 900
Effective Board Leadership: Technology, Governance and Strategy	3	26 May 10 Nov	R18 900
High Impact: Women in Leadership	3	10 Mar 06 Aug	R15 145
Harnessing your Emotional and Social Intelligence	3	TBC	R15 145

Supply Chain and Project Management

Programme	Duration (Days)	Start Date/s	Programme Fee
Project Management in Practice	12	12 May 20 Oct	R59 900
Advanced Project Management	5	07 Apr 18 Aug	R24 900
Competent Project Management	3	26 Mar 17 Sep	R15 900
Supply Chain Management	3	09 Apr 19 Nov	R15 145



Law

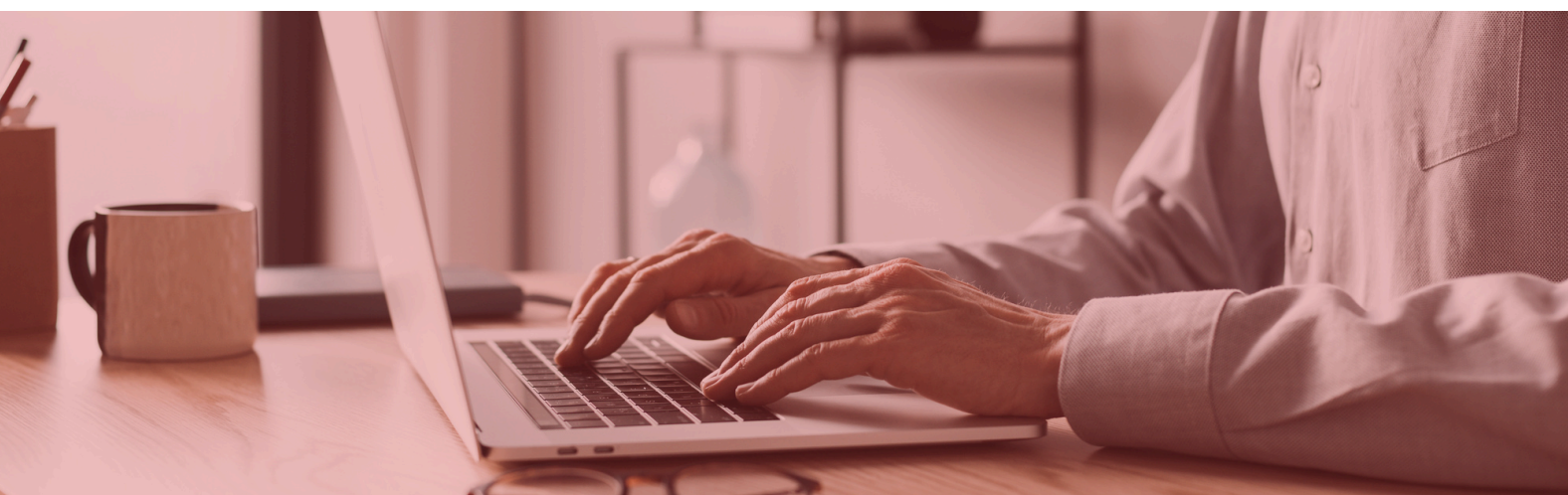
Programme	Duration (Days)	Start Date/s	Programme Fee
Certificate in Forensic Investigation Techniques	6	07 Apr 15 Sep	R22 000
Certificate in Labour Law	6	12 May 06 Oct	R14 900
Certificate in Advanced Labour Law	6	23 Jun 27 Oct	R18 900

Essentials for Business

Programme	Duration (Days)	Start Date/s	Programme Fee
Safety, Health and Environment (SHE) Management Programme	12	14 Jul 17 Nov	R39 900
Monitoring, Evaluation and Research Skills Programme	5	05 May	R59 900
Business Communication	3	26 Mar	R15 145
Contracts Management	3	03 Jun	R15 150

Finance

Programme	Duration (Days)	Start Date/s	Programme Fee
Finance for Non-Financial Managers	3	03 Mar 15 Sep	R15 145
Municipal Finance Management Programme	3	24 Feb 27 Oct	R15 900



OPEN PROGRAMMES

Bridging/Access

Programme	Duration	Start Date/s	Programme Fee
Certificate in Sports Science and Physical Education	1 year	31 Mar	R23 600
Certificate in Business Administration	6 months	10 Mar	R21 859
Certificate in Public Administration	6 months	10 Mar	R28 194

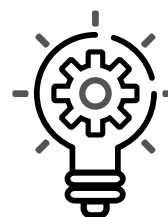
Academic Development Programme

Programme	Duration (Days)	Start Date/s	Programme Fee
Assessing Learning in Higher Education	3	12 May 04 Aug	R9 299
Teaching and Learning in Higher Education	3	24 Mar 14 Jul	R9 299
Designing and Evaluating Curricula in Higher Education	3	26 Feb 27 Aug	R9 299
Supervising Research in Higher Education	3	09 Apr 15 Sep	R9 299

Due to the extended planning horizon, UEL reserves the right to amend dates and prices at short notice, whilst protecting the consumer rights and interests of prospective delegates.

UEL programmes will also be migrating to UKZN itself during the course of 2025 and there may be some changes to this portfolio as a result of this merger. For the most accurate information, please visit our website.

- Webinars / Workshops can be held on request
- Open programmes can be customised and offered to clients nationally and internationally
- Please visit our website for further courses available on request
- Face-to-face / contact programmes or online programmes are available on request



Management and Leadership

- Executive Leadership Development Programme (Higher Education)
- Advanced Leadership Development Programme (Higher Education)
- Leadership Development Programme (Higher Education)
- Public Leadership Development Programme
- Coaching for Managers
- Leadership and Good Governance Programme
- Advanced Leadership and Good Governance Programme

Human Resources

- Aligning Human Resources with Organisational Strategy
- Building a Talent Management Culture
- Conflict Management and Dispute Resolution
- Change Management Programme
- Ethics and Integrity in the Workplace

Marketing

- Introduction to Marketing
- Strategic Marketing Management
- Customer Experience Management
- Integrating Social Media into your Marketing Strategy
- Events Management

Languages

- isiZulu Basic
- isiZulu Intermediate
- Sign Language
- English Proficiency
- French for beginners
- Sesotho basic
- Mandarin
- Portuguese

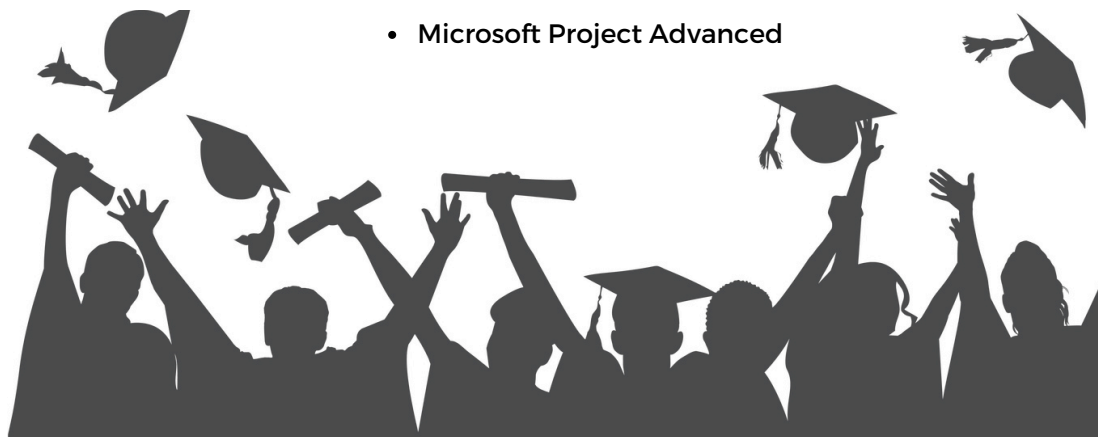


Specialised

- Personal and Professional Impact Programme (Work Readiness)
- Chartered Accountant Board Exam
- Food Security and Vulnerability Analysis
- Certificate in Intellectual Property and Indigenous Knowledge Systems (IKS)
- Essentials for Business Start-ups
- Principles and Practice of Academic Peer Review
- Applied Population Studies Training & Research (APSTAR)
- Trade, Investment Promotion and Economic Development Programme (TIPED)

Microsoft Office

- Introduction to Computers, Windows and File Management
- Microsoft Word Basic
- Microsoft Excel Basic
- Microsoft PowerPoint Introduction
- Microsoft Project Introduction
- Microsoft Word Intermediate
- Microsoft Excel Intermediate
- Advanced Microsoft Word
- Advanced Microsoft Excel
- Advanced Microsoft PowerPoint
- Microsoft Project Advanced



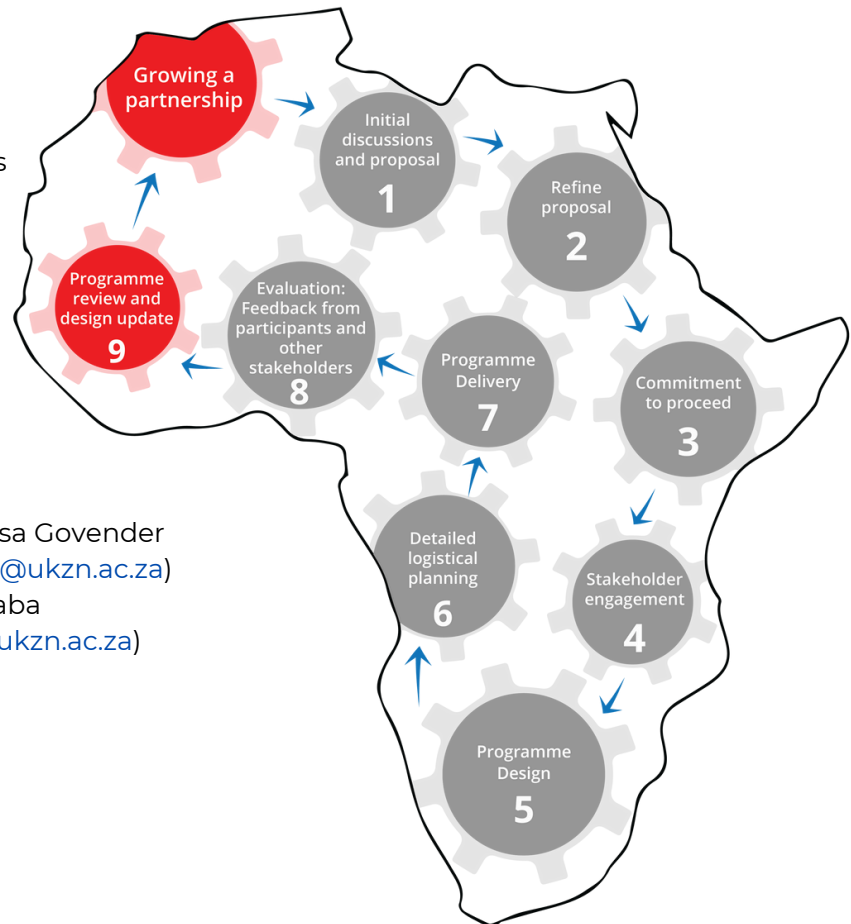
CUSTOMISED PROGRAMMES

We also provide customised in-house programmes for clients, uniquely designed to meet specific development needs across public and private sectors, including Management and Leadership development programmes, and niche offerings in areas such as Occupational Therapy, Monitoring and Evaluation, Renewable Resources (Water and Energy) and Work Readiness (new entrants to the workplace).

We are also able to customise existing programmes to ensure your identified learning and development areas are adequately addressed.


We will continue to introduce relevant and innovative programmes to address your needs. Should you wish to meet and discuss your training and development needs, or wish to have a programme specifically designed for your organisation, please contact any of our colleagues:

Our Customisation Process:




Contact us

- Sarah Haffenden (strauss@ukzn.ac.za)
- Shaughnessa Govender (Govendersh@ukzn.ac.za)
- Zamandlovu Ndlovu (Ndlovuzl@ukzn.ac.za)
- Kerry-lee Gcaba (Nyembek@ukzn.ac.za)

 +27 31 260 1234

 www.ukznextendedlearning.com

 University of KwaZulu-Natal,
 Howard College Campus,
 Innovation Centre, Room 212,
 Gate 9, Rick Turner Road,
 Durban, 4001

